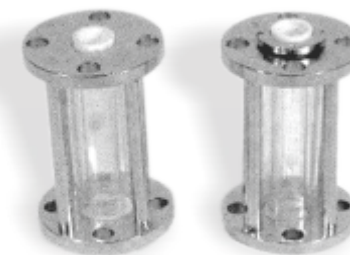


Borolab
Scientific Glass Pvt. Ltd.

SIGHT GLASS



MS Frame Sight Glass

DN	L	L1	Cat. Ref. Table E	Cat. Ref. Table F	Cat. Ref. Table ASA
25	192	150	BSG1/E	BSG1/F	BSG1/A
40	192	150	BSG1.5/E	BSG1.5/F	BSG1.5/A
50	192	150	BSG2/E	BSG2/F	BSG2/A
80	192	150	BSG3/E	BSG3/F	BSG3/A
100	192	150	BSG4/E	BSG4/F	BSG4/A
150	192	150	BSG6/E	BSG6/F	BSG6/A

SS 304 Frame Sight Glass

DN	L	L1	Cat. Ref. Table E	Cat. Ref. Table F	Cat. Ref. Table ASA
25	192	150	BSG1/E/304	BSG1/F/304	BSG1/A/304
40	192	150	BSG1.5/E/304	BSG1.5/F/304	BSG1.5/A/304
50	192	150	BSG2/E/304	BSG2/F/304	BSG2/A/304
80	192	150	BSG3/E/304	BSG3/F/304	BSG3/A/304
100	192	150	BSG4/E/304	BSG4/F/304	BSG4/A/304
150	192	150	BSG6/E/304	BSG6/F/304	BSG6/A/304

SS 316 Frame Sight Glass

DN	L	L1	Cat. Ref. Table E	Cat. Ref. Table F	Cat. Ref. Table ASA
25	192	150	BSG1/E/316	BSG1/F/316	BSG1/A/316
40	192	150	BSG1.5/E/316	BSG1.5/F/316	BSG1.5/A/316
50	192	150	BSG2/E/316	BSG2/F/316	BSG2/A/316
80	192	150	BSG3/E/316	BSG3/F/316	BSG3/A/316
100	192	150	BSG4/E/316	BSG4/F/316	BSG4/A/316
150	192	150	BSG6/E/316	BSG6/F/316	BSG6/A/316

Sight glass is a device used between any kind of non transparent pipelines to observe the flow of liquid. This can be used both in horizontal as well as vertical pipeline. Sight glass is constructed in such a way that it gives a complete view from every angle.

A sight glass consists of one glass pipe section, one metal frame, a pair of PTFE bushes and washers and an acrylic cover. Borosilicate pipe section is highly heat resistant, has excellent chemical resistance and has low thermal expansion. Metal frame is composed of two flanges which are welded with studs so that the stresses and vibrations of the pipeline do not transfer to the glass pipe section. Its check nut keeps the glass pipe section in compression and provides ease in replacement.

PTFE bushes on both sides of glass pipe section ensures that liquid in the pipeline does not come in contact with metal frame. PTFE washers are used as gaskets while fitting the sight glass in the pipeline. Acrylic cover covers the glass pipe section and protects it from outer damages.

Sight glass can be supplied with MS/SS304/SS316 frame with any standard drilling.

